

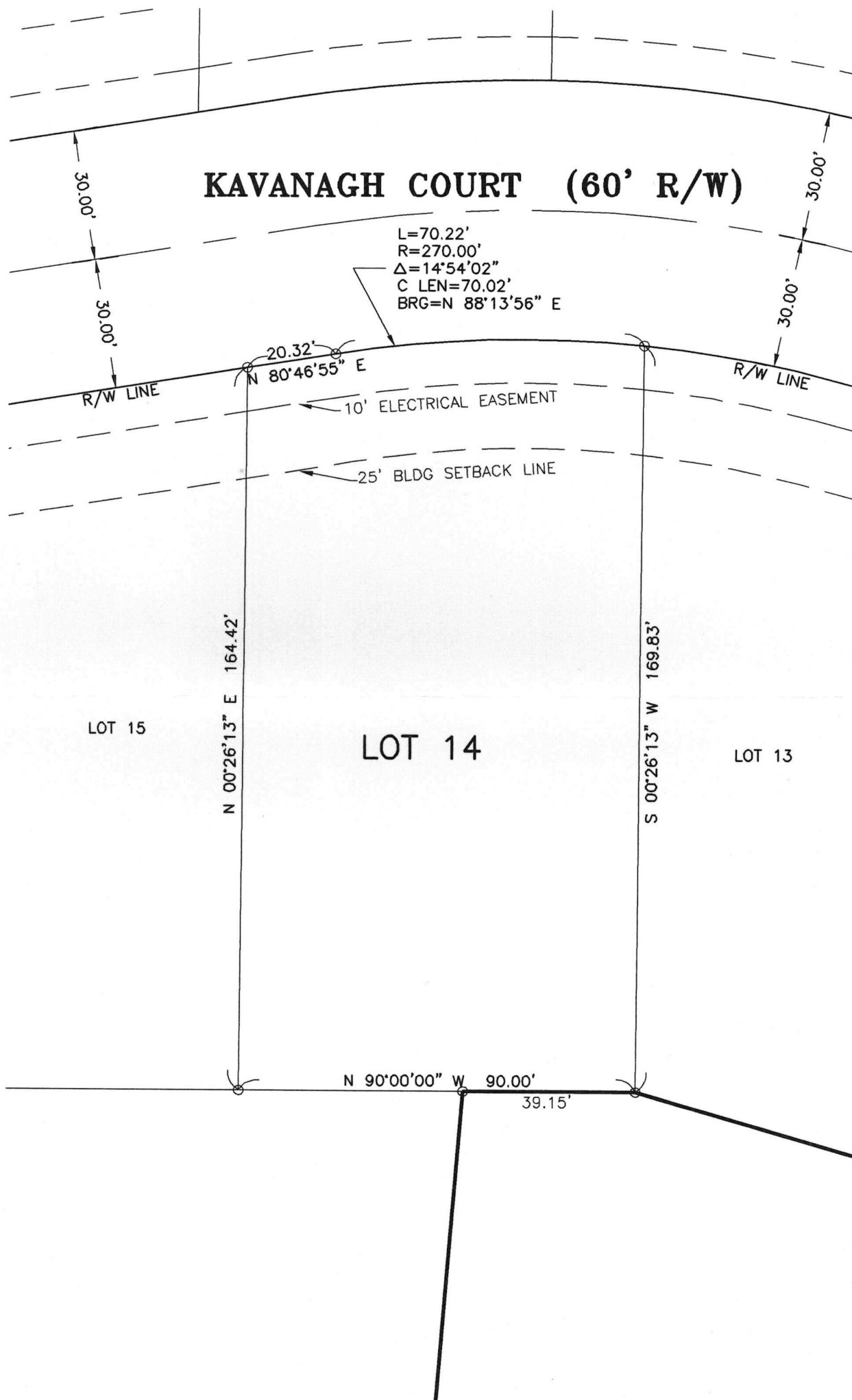
# WINTERGREEN MEADOWS LOT 14

SURVEY ORDERED BY: COOREMAN REAL ESTATE GROUP, INC  
 SURVEY DATED: 11-16-2007  
 PROJECT NO.: 070114

## LEGAL DESCRIPTION

PART OF THE SOUTHWEST QUARTER OF SECTION 35, T.38 N., R.1 W. TOWN OF  
 NEW CARLISLE, OLIVE TOWNSHIP, ST. JOSEPH COUNTY, INDIANA

LOT 14, WINTERGREEN MEADOWS MAJOR SUBDIVISION SECTION 1.



- LEGEND**
- FOUND IRON PIPE
  - SET IRON PIPE W/CAP
  - SET WOOD HUB

**Danch, Harner & Associates, Inc.**  
 Land Surveyors • Professional Engineers  
 Landscape Architects • Land Planners

Office: (574)234-4003 / (800)594-4003 • Fax: (574)234-4119  
 1643 COMMERCE DRIVE • South Bend, IN 46628

© Copyright 2006 Danch, Harner & Associates, Inc.

