

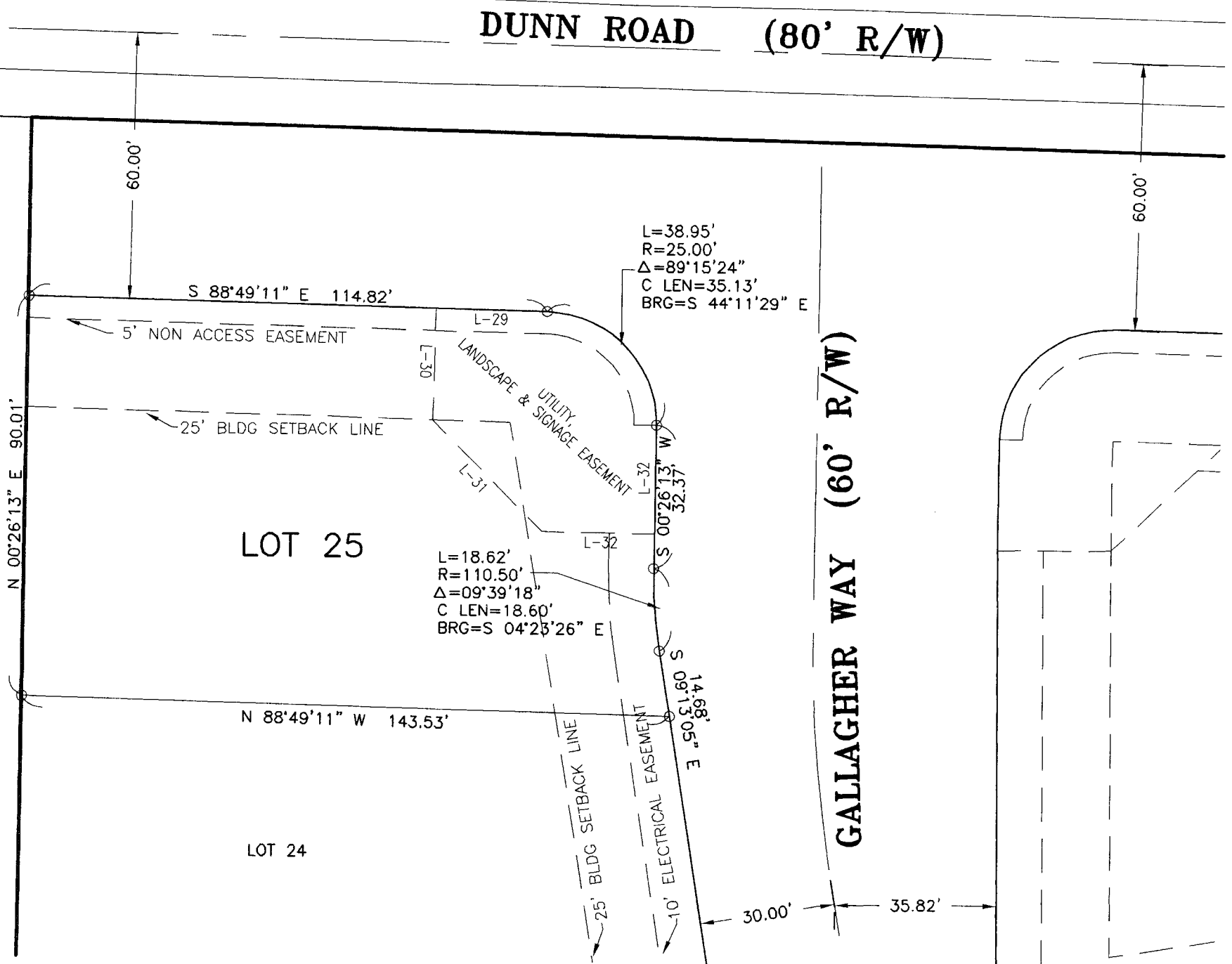
WINTERGREEN MEADOWS LOT 25

SURVEY ORDERED BY: COOREMAN REAL ESTATE GROUP, INC
 SURVEY DATED: 11-16-2007
 PROJECT NO.: 070114

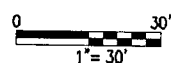
LEGAL DESCRIPTION

PART OF THE SOUTHWEST QUARTER OF SECTION 35, T.38 N., R.1 W. TOWN OF NEW CARLISLE, OLIVE TOWNSHIP, ST. JOSEPH COUNTY, INDIANA

LOT 25, WINTERGREEN MEADOWS MAJOR SUBDIVISION SECTION 1.



L-29	S 88°49'11" E	24.59'
L-30	N 01°10'49" E	25.00'
L-31	N 44°11'29" W	35.00'
L-32	N 89°33'47" W	25.00'
L-33	S 00°26'13" W	24.59'



LEGEND

- FOUND IRON PIPE
- SET IRON PIPE W/CAP
- SET WOOD HUB



Danch, Harner & Associates, Inc.

Land Surveyors • Professional Engineers
 Landscape Architects • Land Planners

Office: (574)234-4003 / (800)594-4003 • Fax: (574)234-4119

1643 COMMERCE DRIVE • South Bend, IN 46628

© Copyright 2006 Danch, Harner & Associates, Inc.

