

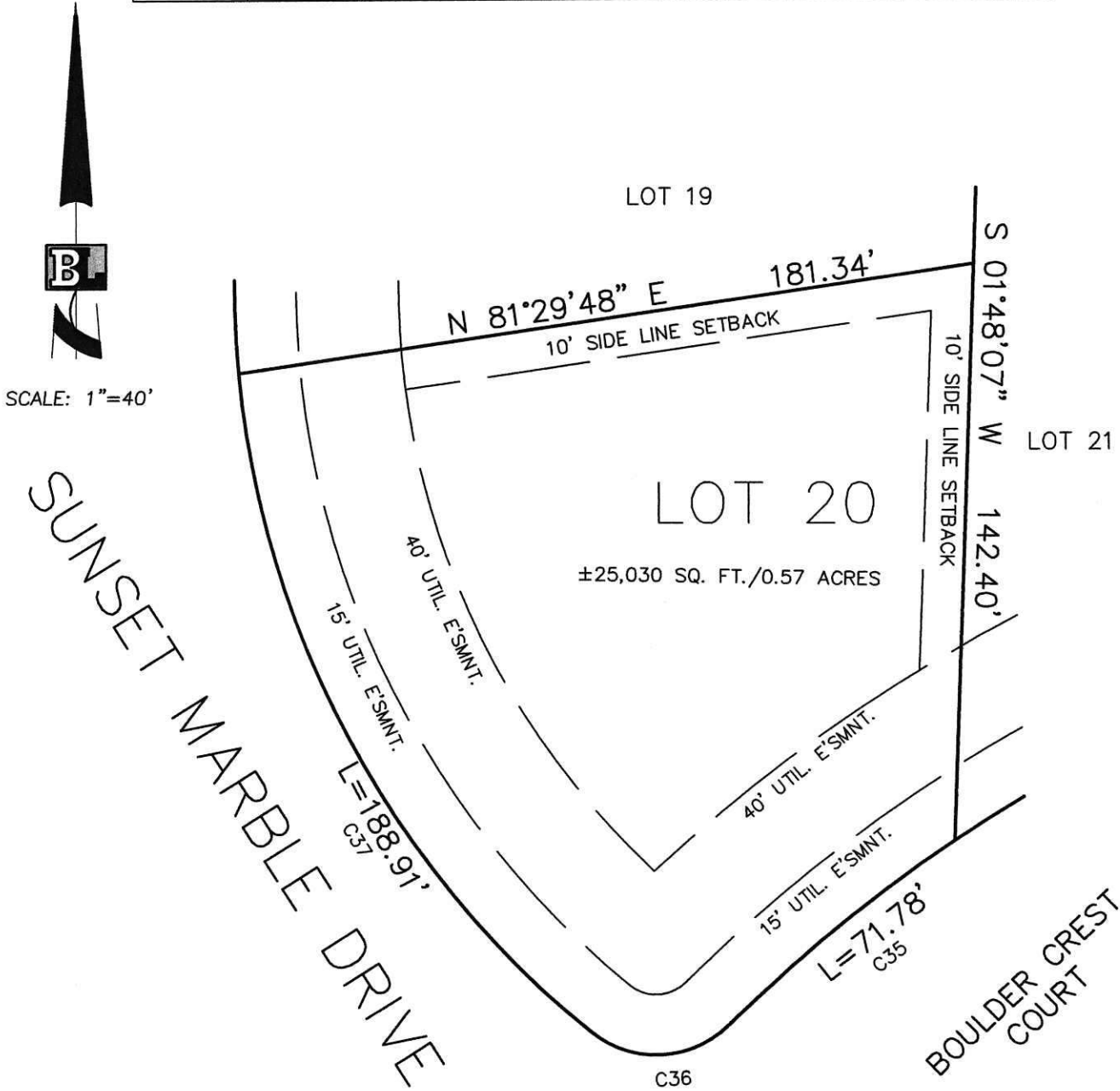


Bollinger, Lach & Associates, Inc.

SITE PLAN

RE: 53240 SUNSET MARBLE DRIVE / 26681 BOULDER CREST COURT

CURVE TABLE						
CURVE	RADIUS	LENGTH	CHORD	BEARING	TANGENT	DELTA
C35	370.00	71.78	71.67	S 50°26'55" W	36.00	11°06'55"
C36	25.00	36.97	33.69	N 87°15'07" E	22.80	84°43'19"
C37	240.00	188.91	184.07	S 27°50'15" E	99.65	45°05'56"



SIDELINE SETBACKS BETWEEN LOTS MUST BE A COMBINED 20' MINIMUM, WITH 8' MINIMUM ALLOWED ON ONE LOT.

CONSULTING ENGINEERS & LAND SURVEYORS	Bollinger, Lach & Associates, Inc.				
	24545 BRICK RD. • SOUTH BEND, IN 46628 • (574)-243-5700				
DRAWN: AB	CHKD: AB	FB: _____	RF: _____	DISK: _____	JOB: 791S-000

e:\QWS\dwg\lotcorner\lca.dwg